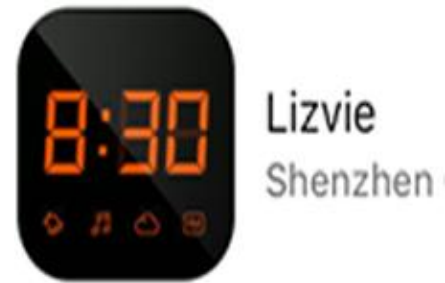


# Smart Phone / Tablet connect by Sound Wave (First Add)

(Graphics are based on I-phone).

1. Download the app  
“Lizvie”



2. Connect the camera for power, LED will be lit. (The light is very dim)

3. Wait about 1 min until LED light starts to blink in 2x burst sequence.

4. Connect your phone WiFi to the **same** network you wish the camera to connect.

(The WiFi network must be at **2.4GHz**. Our WiFi camera **will not work on a 5G network**.)

If you have a dual band router, please make sure 2.4GHz connection is available.)

Also make sure DHCP is ON (it should be ON as a default setting of your router)

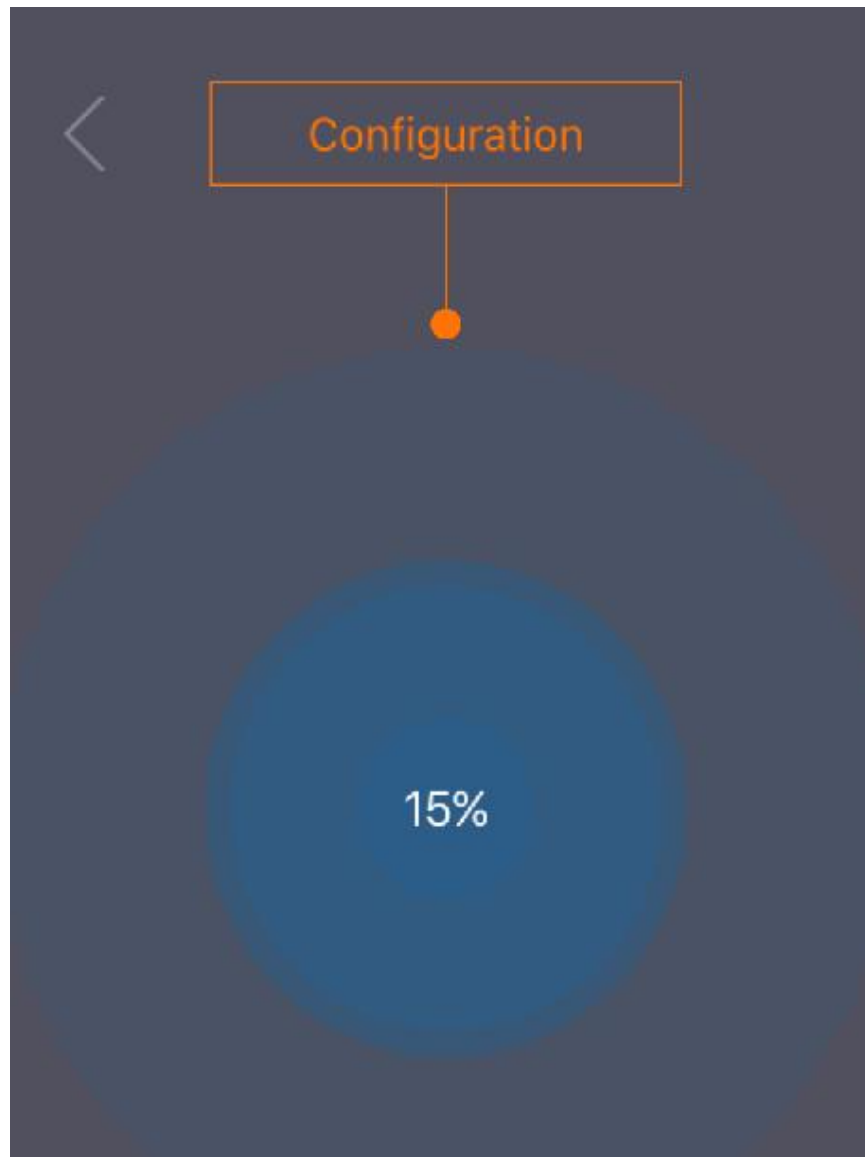
5. Open the app and “**Add Camera**” or click on “**+**” then choose “**First Add**”

6. Select “**Other Pinhole Cameras**” then “**next**”.

7. Scan the QR Code and input your WiFi password.

8. Set the phone volume is at **high**, bring it close to the camera and press “**Start Configuration**”.

9. As you are watching the following screen...



You will notice the % sign going up in number. If all goes well, the number will go up to about 30% then skip to 95%, 100% then success.

If there would be any problem, it will go from 1% to 100% continuously then fail.

We test all cameras before shipping so the likelihood of camera being defect is very slim.

**Our WiFi camera will not work on a 5G network. If you have a dual band router, please connect your phone to the 2.4GHz WiFi network. Also make sure your router DHCP setting is turned ON.**


**Please see the Troubleshooting section of this manual for other reasons for the failed connection.**

Once the set-up is complete you will be able to stream video remotely. You can add up to 5 remote devices and access the camera simultaneously. To add, simply set the device on the same network and start from step 6 to step 11. You must use the same camera PW because the **PW is in the camera not in the app**. In other words, If you change the camera PW with one device, you must change to the same PW for all other devices connected.

## 11. Discrete camera name:

Once the camera connects to your router, the device name will show as: “new-host-XX”



<b>PC Name:</b>	new-host-9
<b>Connection Type:</b>	 Wireless
<b>IP Address:</b>	192.168.1.21
<b>Status:</b>	Active
<b>Remote Access:</b>	Enabled

**- You will need to reset and repeat all above steps if you are.....**

1. Moving the camera to another network location.
2. Changing your router or router settings such as PW, wireless encryption mode etc.
3. If you forget the camera PW.

## **12. Resetting the camera:**

When the camera loses connection to the router, the LED light will blink rapidly and continuously. Power the camera and hold the reset button for 10~15 seconds and release.

Wait about a minute.

If successful, **LED light will blink (2x rapid bursts again)**

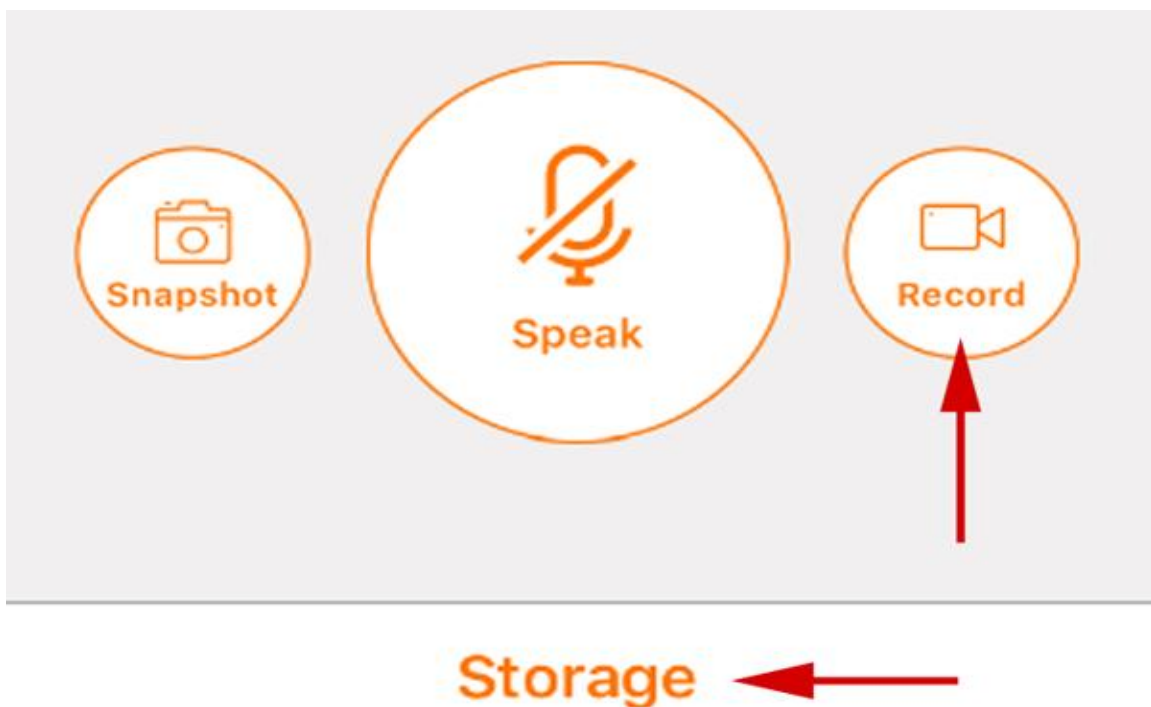
# Recording and Playback

## 13. SPOT RECORDING

(Records on to your phone memory while streaming video)

This method is useful if you need to quickly record an incident while watching live video. Just press the record button at the live view screen, press storage then video to playback.

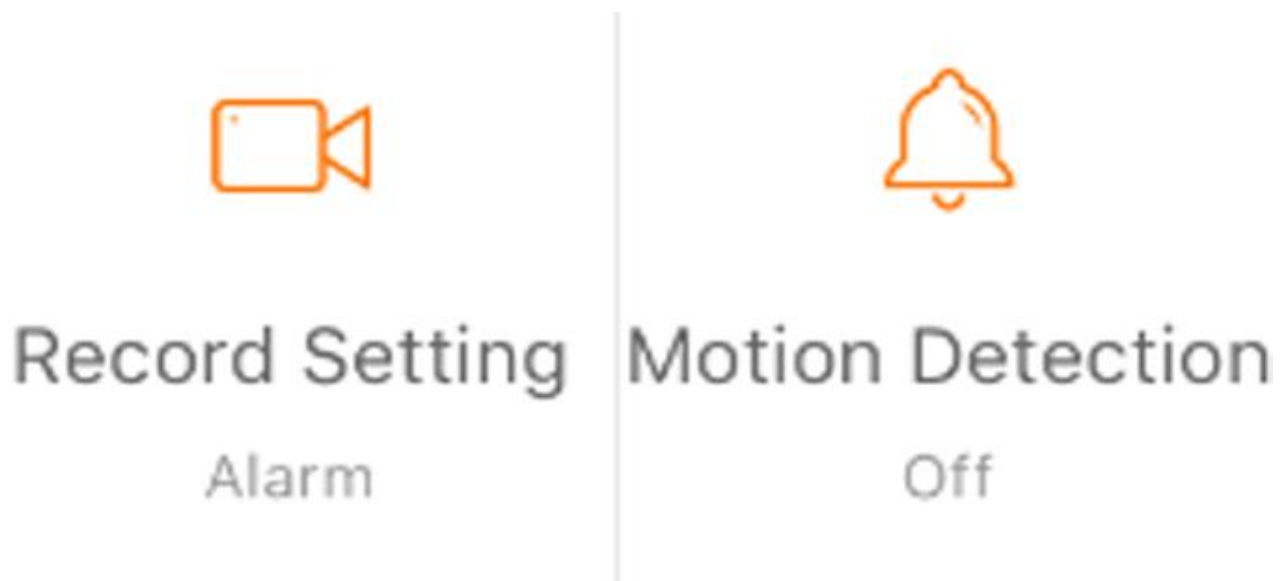
(5min = 35Mb)



## 14. SD CARD RECORDING

All our WiFi cameras come with 8GB built-in memory which you can store about 40 hrs of video. The best way to record is by motion detection.

Go to the setting screen and set the record setting to “alarm”. Also adjust motion detection level.

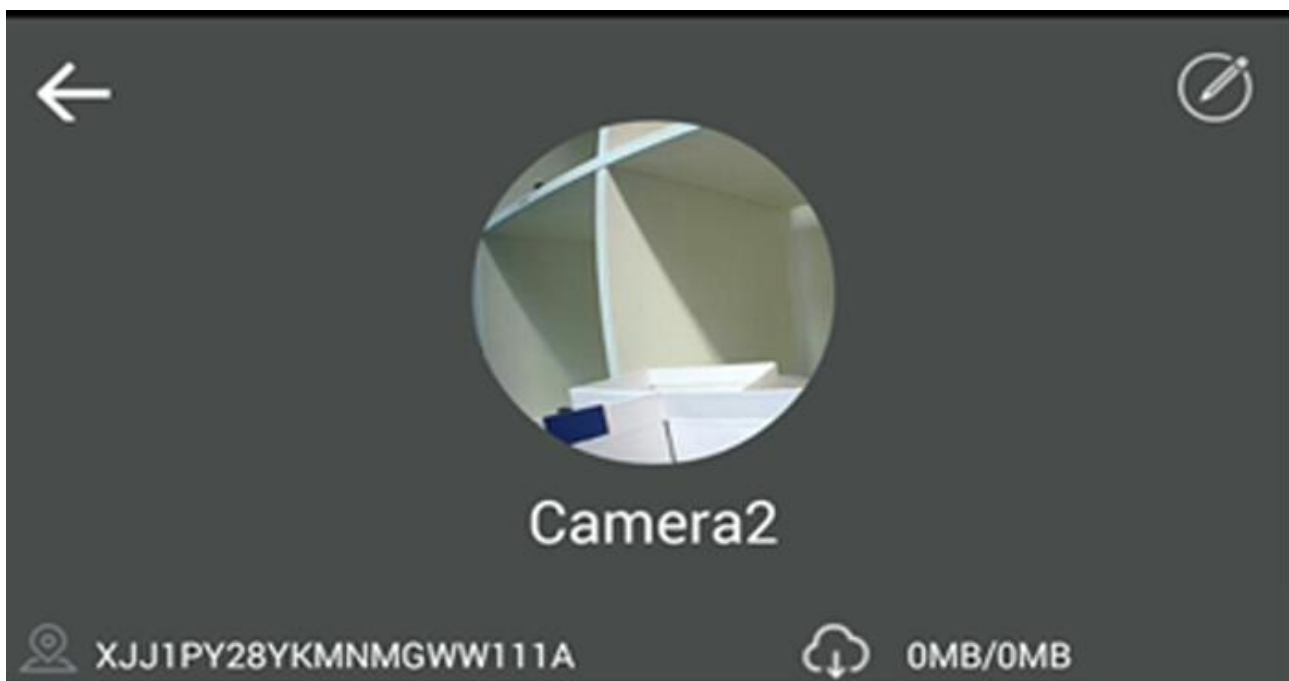


Select the recording setting to “Alarm” and set the motion detection level. Full time recording is not recommended where it may strain the camera.



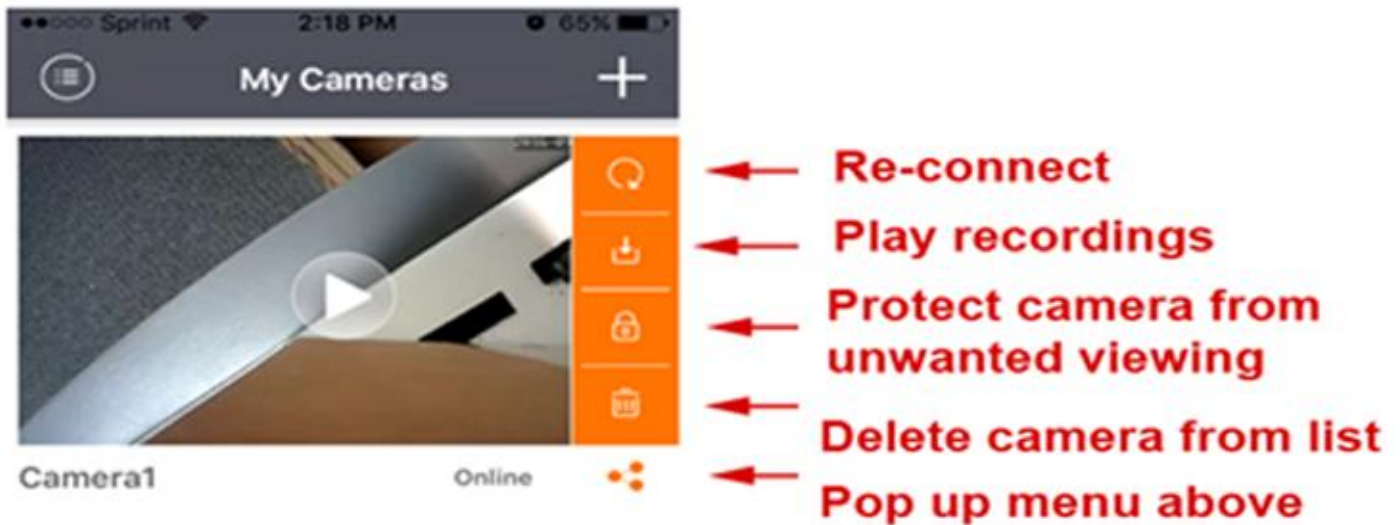
Each motion trigger will create a 1min long video. To playback, press “Storage” then “SD”  
You can upload videos to your phone but you cannot erase selectively, however, you can format the memory at the setting screen.

After formatting, if it displays 0MB/0MB, you will need to reboot, (not reset) the power.



**Click here to format**

# Other features



\* **Lock icon:** this is another way of quickly change PW. You must remember the PW every time you change it.



**Resolution:** If you click on "LD" will change to Low Definition. Do not change.

## Other None functional Buttons:

The app is designed for other camera models.

Do not use the buttons that are mentioned below as they will not work and will only confuse you.

 Environment M... 50Hz	 WiFi Setting ...	 Video Flip Normal
 Modify Password	 Record Setting Alarm	 Motion Detection Medium
 Email Alarm	 Delete	 Infrared light Auto

# Trouble Shooting

## **15. Camera fails to set-up with your router.**

Please make sure to follow the step # 4 & #5 exactly. This is the most common problem especially when you have 2 or more networks or routers in your house and with dual band routers. You cannot connect your smart phone to one network and connect the camera to another.

Try the following if it all fails.

- 1) Turn all routers OFF except for the one that you wish to connect the camera to.**
- 2) Go in the router setting and turn 5G OFF and only turn 2.4GHz ON.**
- 3) Connect your smart phone to the router's WiFi and try the set-up again.**

## 16. The camera still does not connect.

1. Typo on WiFi password input at **step #7**. Wi-Fi password **must be alphanumeric** without spaces and cannot include special characters, such as %, \$, #, @, \*, -, +, etc.
2. Still fails, then turn your router OFF then ON. Do the same for our camera. Resetting your router may help.
3. In a special case, the app may indicate the set-up is failed yet the LED light on the camera may turn solid.  
In this case, open the App, Click "+" ,then click "Manual Input ID". Input the camera UID, or scan the code by clicking the QR code icon. Then input the password of the camera and Save. Default password is "admin".

4. If you are installing the camera in a commercial setting with heavy firewall, this camera may not work.

We do have a direct WiFi set-up version instead of Acoustic Wave version that may work in this case.

**17. Still does not work? Then this may well be the reason. Our cameras work on port80 of your router.**

Many ISP now block port80 to limit customers from using webcams and servers. Also it's because ISP such as AT&T and others tries to sell their own security system.

**Please call them and ask if your port80 is blocked** or has any restrictions. You may not want to mention that you are trying to install any cameras because they will ask you to provide camera's IP and Mac address which

you will not be able to provide because our cameras use P2P connection. If it is blocked, just tell them to open it and get rid of any restrictions.

### **18. No LED Light.**

Power adapter or unit is bad. Contact SCS.

**19. Continuous Rapid LED blinking** error will occur for the following conditions after the camera has been set up and working previously.

1) Out of range to the router.

2) Router down or settings changed such as PW or encryption type.

Reset the camera and set-up the camera again,

## **LED Light Status**

2X blinking: ready for set-up

Sold after blinking: Connection made

Rapid blinking: Needs reset

**If you run into any problems, do not get frustrated, just call our customer support line at: 845-533-4460, M-F, 10:00-5:30 ET**

( No answer? PLEASE leave a message, we'll always get back to you even on the weekends if you request it) **You can also write to:**

**[info@spycameras.com](mailto:info@spycameras.com) or SMS: 914-882-1054**

**Please write a product review  
and email us about it and receive:**

**FREE 2 Year Warranty.**